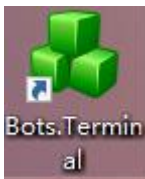


## Bots.Terminal

### Directions for user

#### 1、 Start the software



Double-click the icon to start the software.

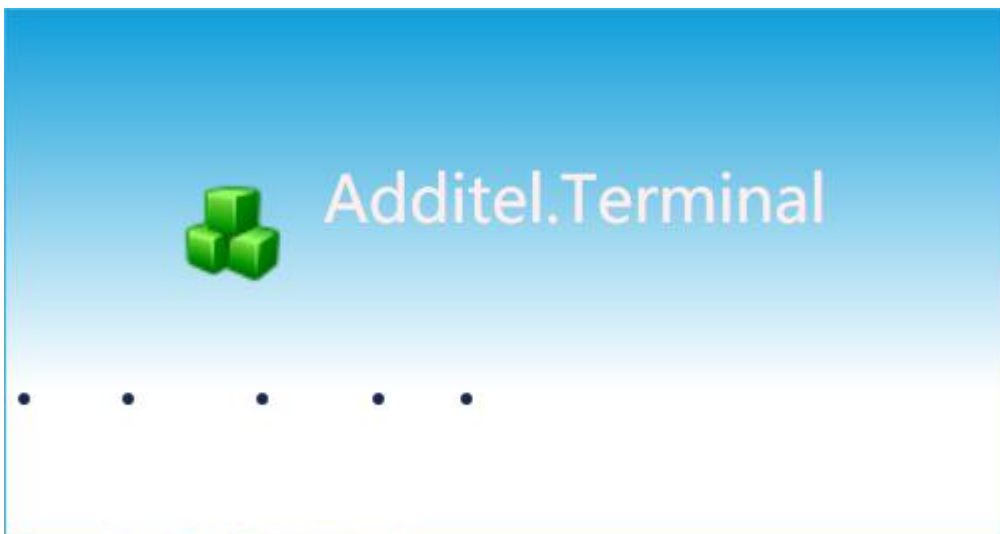


Figure 1-1 startScreen

Figure 1-2 shows the main screen after correct startup.

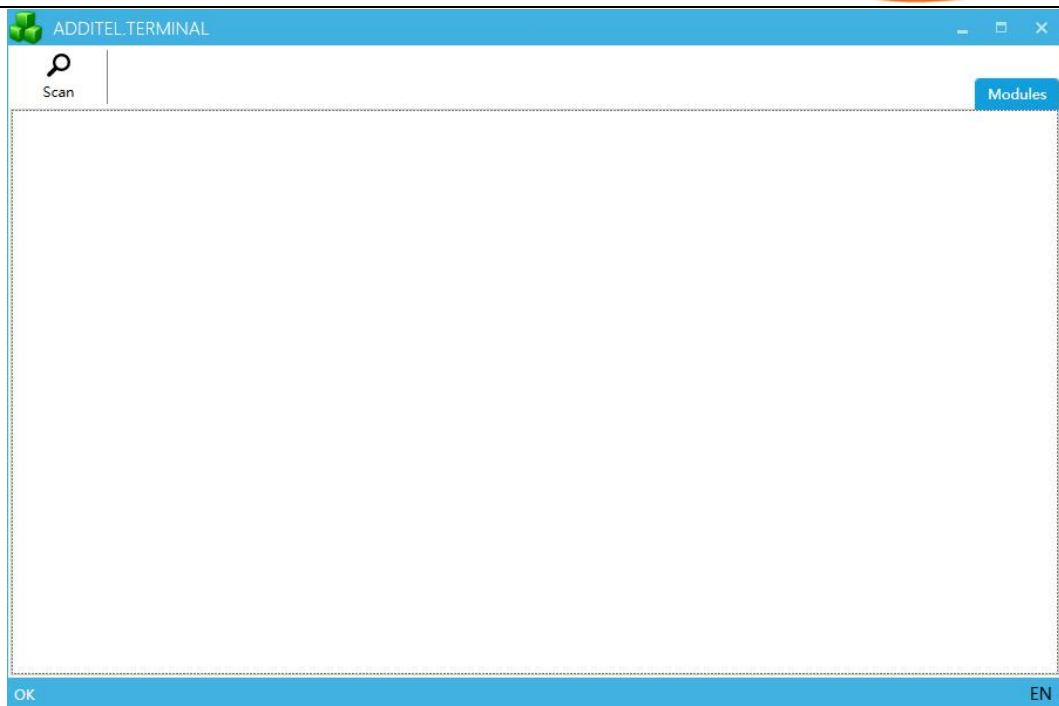


Figure 1-2 main screen

Click Lower right corner of software EN or ZH to set the language, as shown in Figure 1-3 After selecting a language, the application program restarts to switch to the selected language.

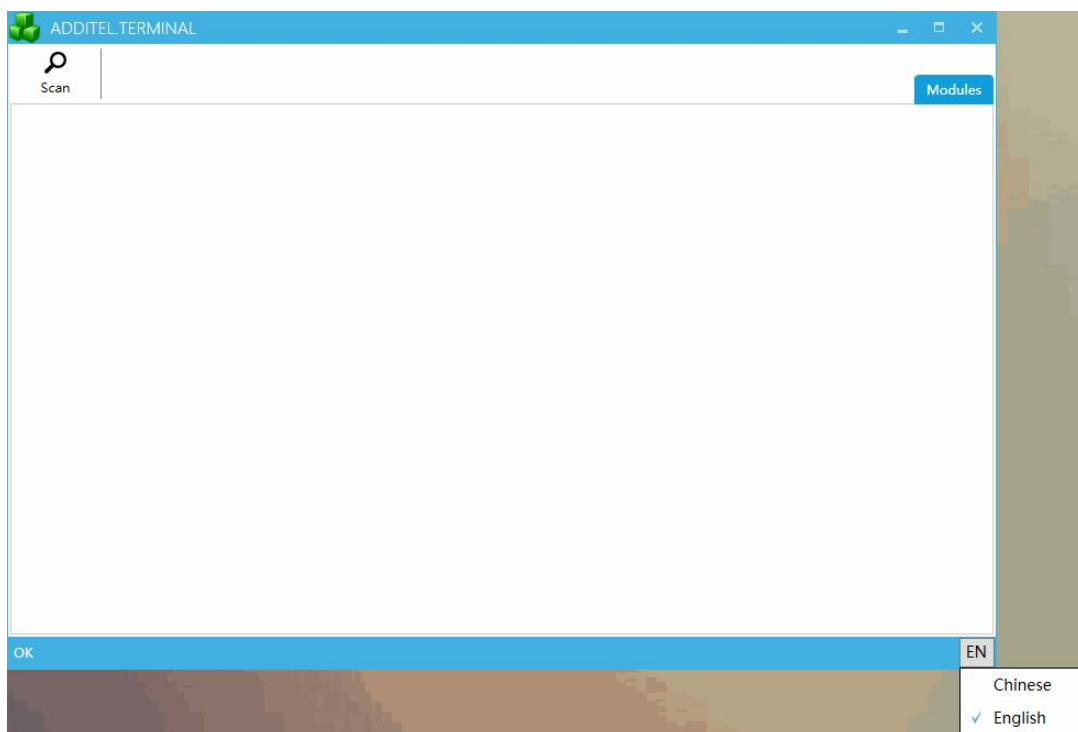


Figure 1-3 change language

## 2、Scan

Click the [Scan] button to find the devices to be upgraded. Of course, you need to connect the device to your computer first, and make sure the driver is installed and communicating properly.

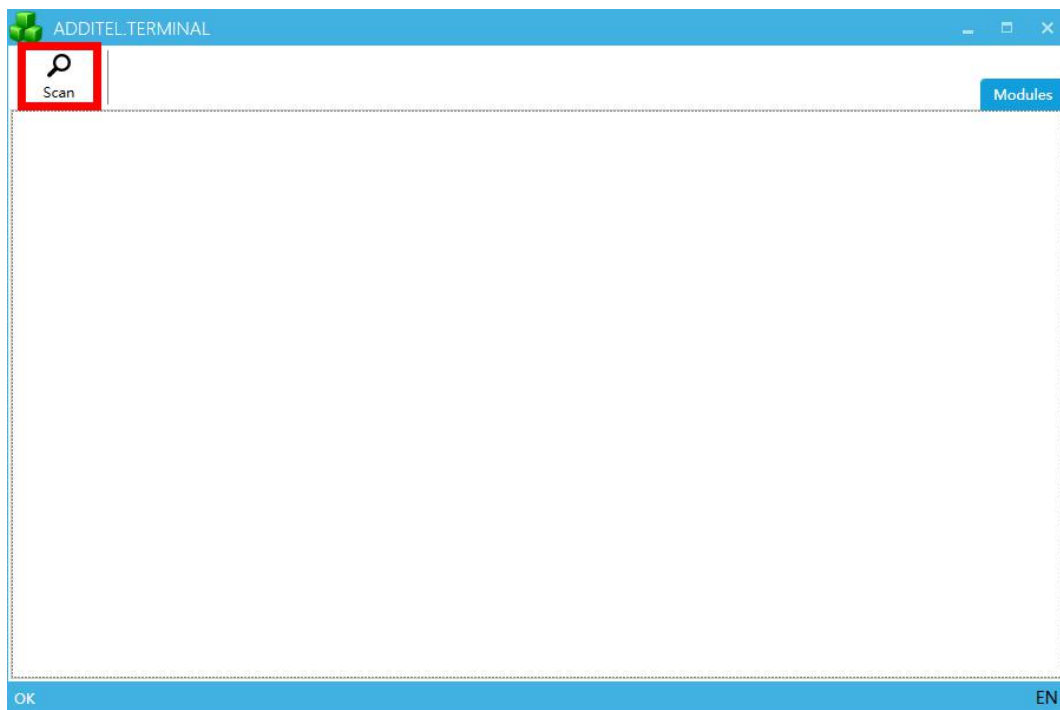


Figure 2-1 start scanning

After clicking scan, the software starts to scan the device, and the progress bar is displayed in the lower left corner of the software. At this time, users can click the button to stop scanning, as shown in Figure 2-2.

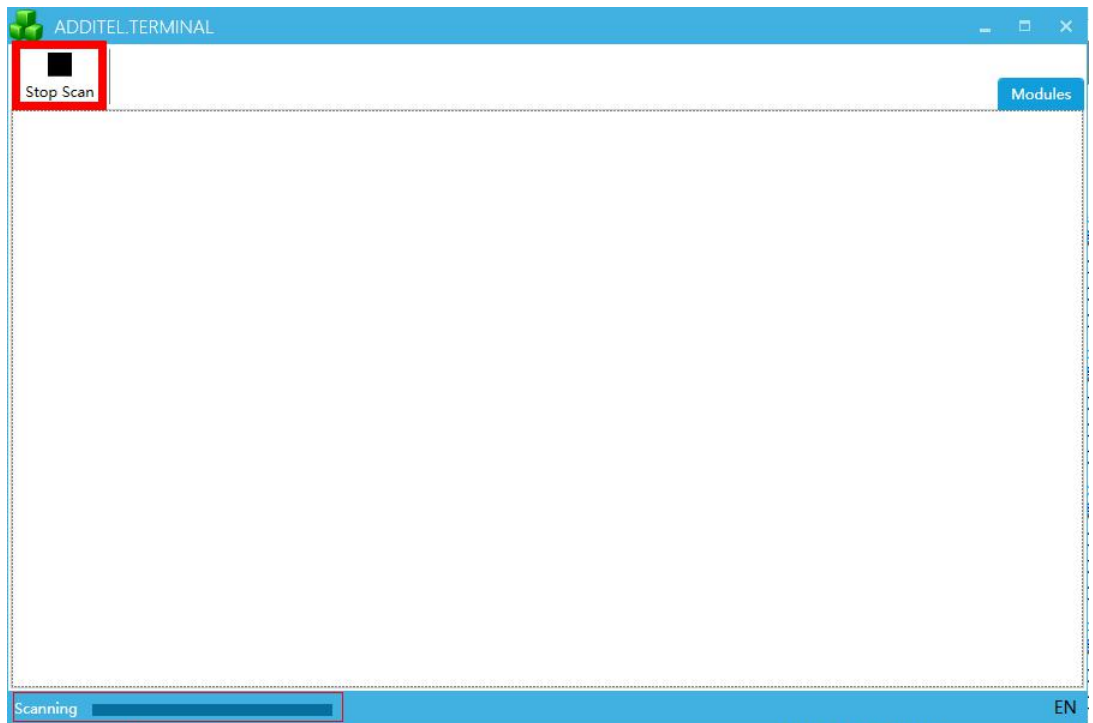


Figure 2-2 scanning

After the scan is complete, the software displays the devices to be upgraded, as shown in the figure 2-3

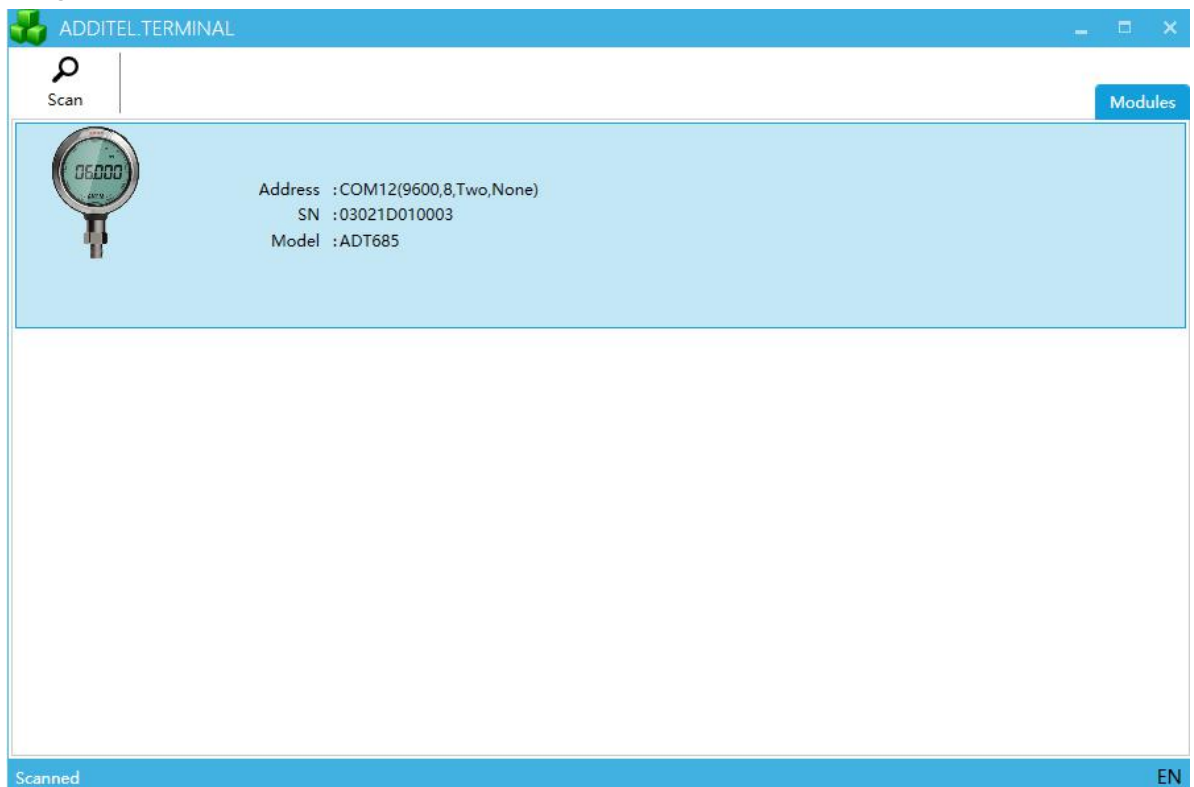
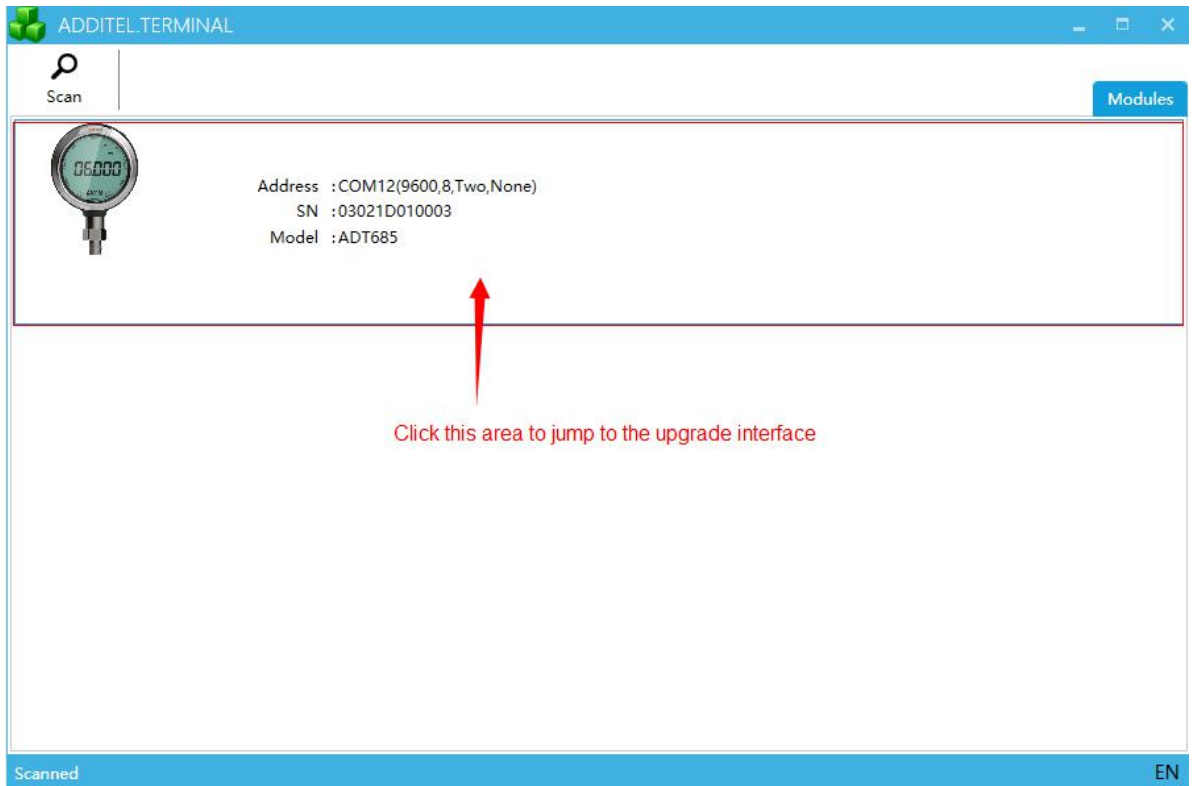






Figure 2-3 scan is complete

## 3、Upgrade



 MODULE UPGRADE

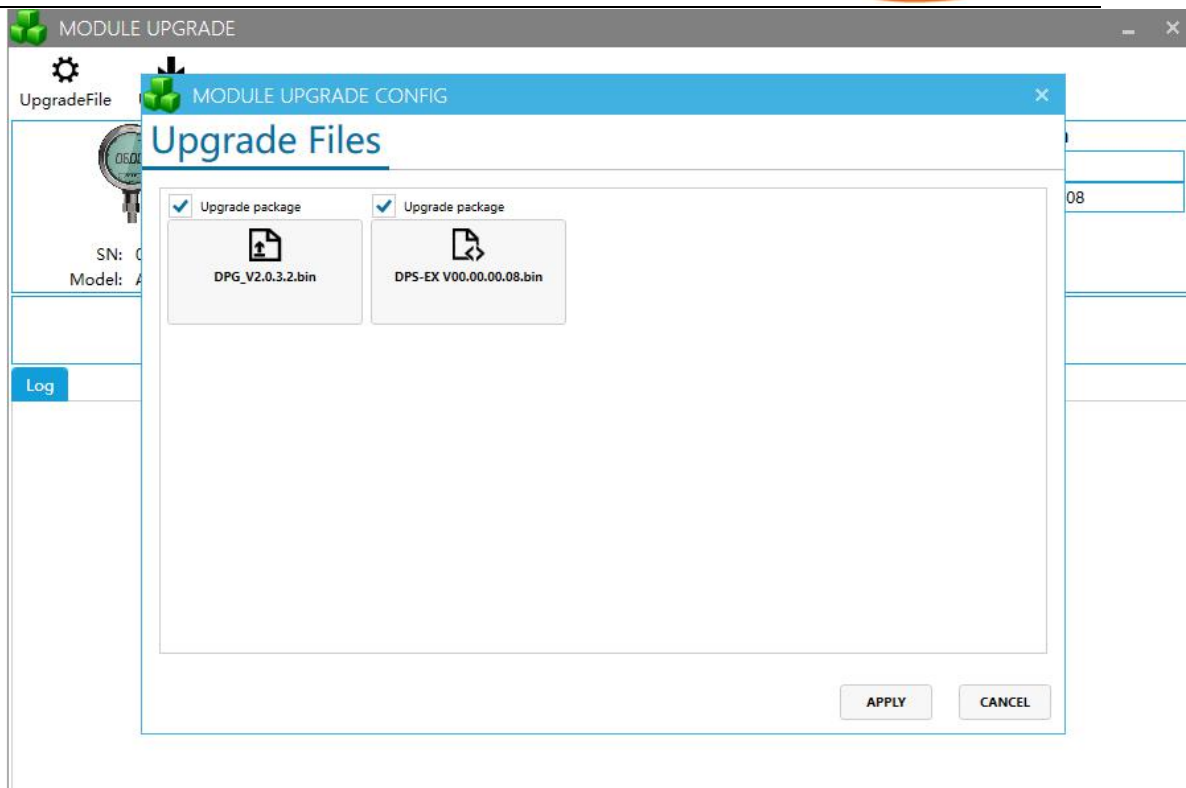
 UpgradeFile    Upgrade

  
SN: 03021D010003  
Model: ADT685


	Current Version	Update Version
Firmware Version:	V2.0.3.1	
Sub Module:	V00.00.00.08	



Log


After the upgrade page is initialized, click the button [UpgardeFile] in the upper left to select the local upgrade package.



Click the icon to select the local upgrade file. Then click the button [APPLY] to jump to the last screen.


**MODULE UPGRADE**

 UpgradeFile
  Upgrade






SN: 03021D010003  
Model: ADT685


	Current Version	Update Version
<b>Firmware Version:</b>	V2.0.3.1	DPG V2.0.3.2
<b>Sub Module:</b>	V00.00.00.08	DPS-EX V00.00.00.08

Log

After the UpgradeFile is loaded,click the button [Upgrade] to start upgrading.


**MODULE UPGRADE**

 UpgradeFile
  Upgrade



SN: 03021D010003  
Model: ADT685

	Current Version	Update Version
<b>Firmware Version:</b>	V2.0.3.1	DPG V2.0.3.2
<b>Sub Module:</b>	V00.00.00.08	DPS-EX V00.00.00.08

.....

Log

Begin Upgrade : 9/3/2021 11:08:03 AM  
 Host Loader Version : V0.2.2.0  
 Sub Module-DPSEX : Begin Upgrade  
 Sub Module-DPSEX Loader Version : V00.03  
 Sub Module-DPSEX : Internal flash maximum packet length (1024) maximum package download timeout (1853) erase timeout (4800)



---

The device upgrade is complete.

Note: Software cannot be closed during the upgrade.