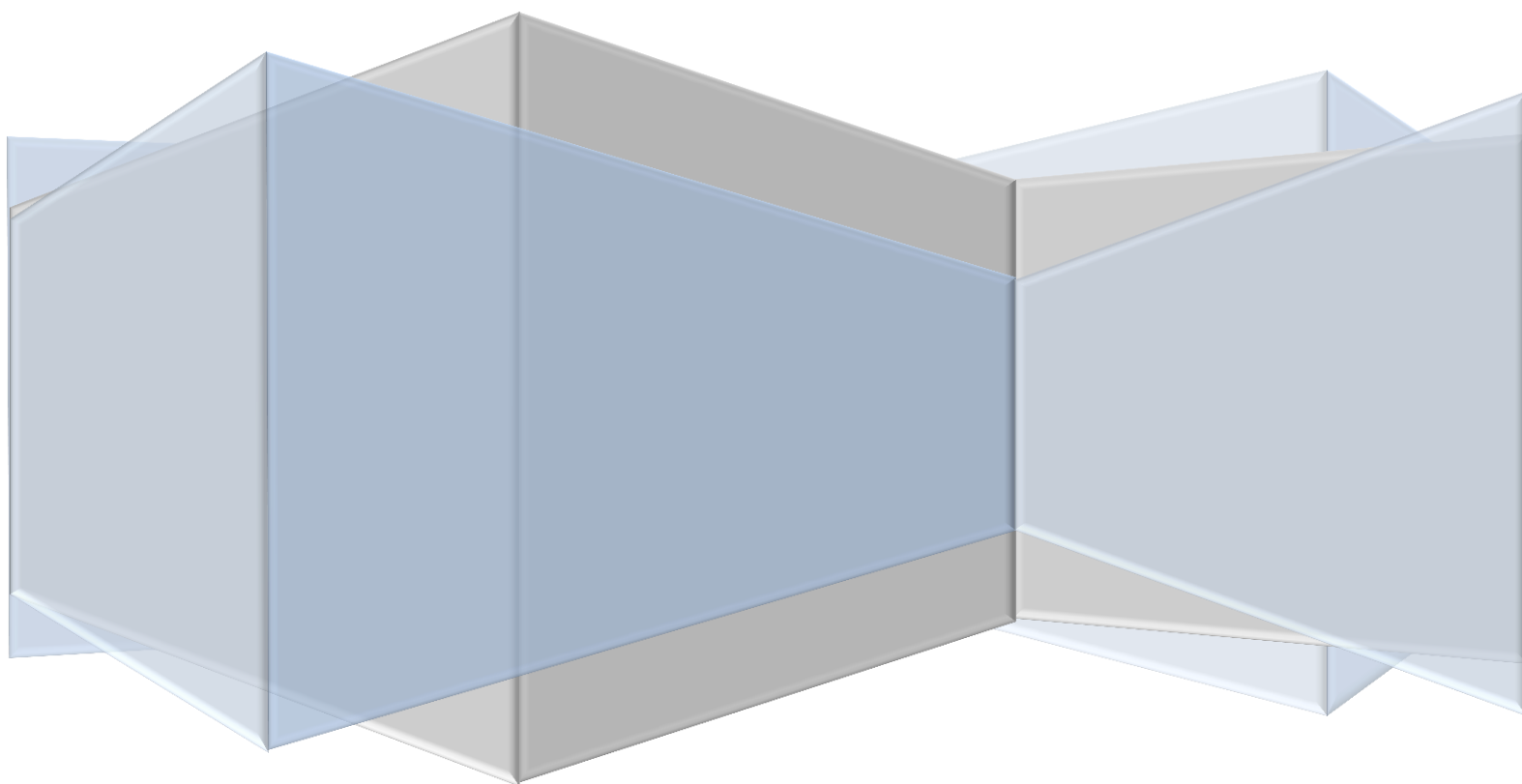


Companion of installing WMD Driver



Additel Corporation

www.additel.com

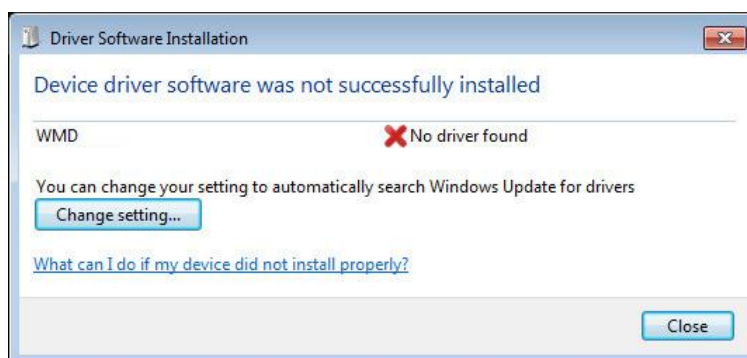
Contents

Instruction for installing WMD Driver manually.	2
How to install WMD Driver in Windows 8/8.1.....	6

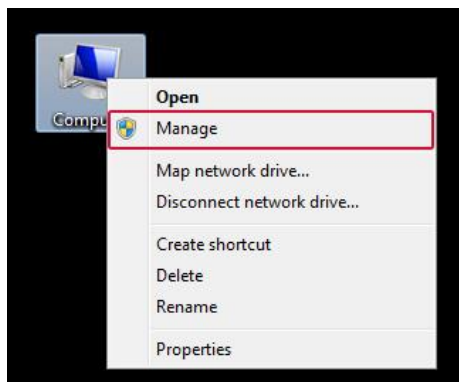
Instruction for installing WMD Driver manually.

Wireless Master Device requires a computer with a USB port. And WMD Driver is necessary for Wireless Master Device. To do so, follow these steps:

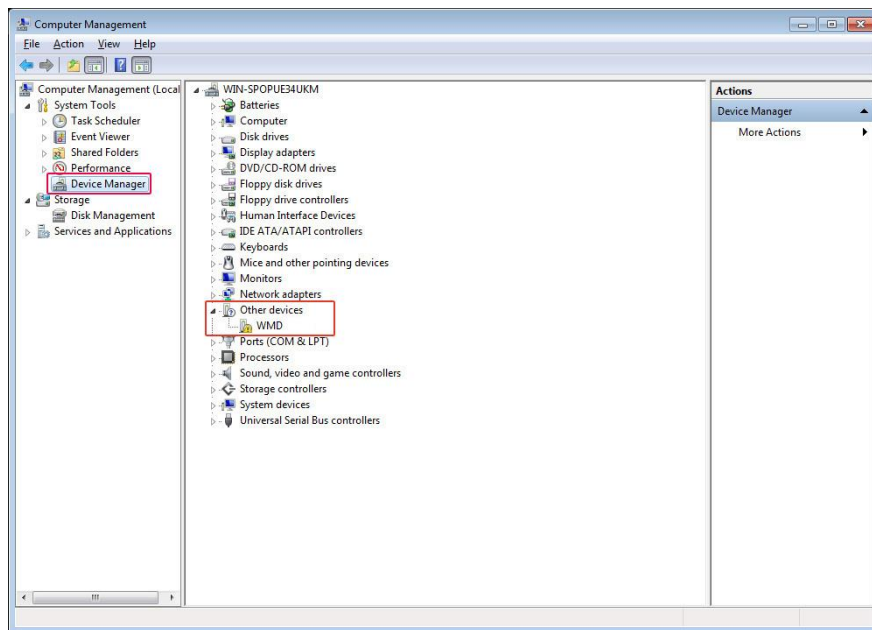
1. At the first time you plug the Wireless Master Device in the USB port of the computer, a message box will be displayed on the screen. It means that WMD driver was not successfully installed.



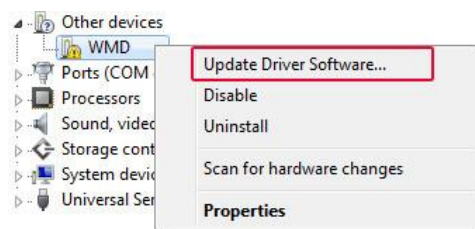
2. Right click "Computer", a list will be shown as below. Then click "Manage", you will find the "Device Manager".



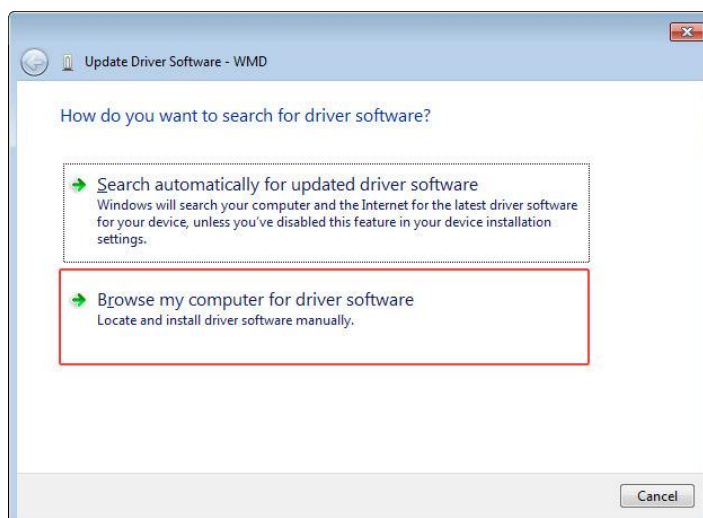
3. WMD was shown in the “Other devices” as its driver was not successfully installed.



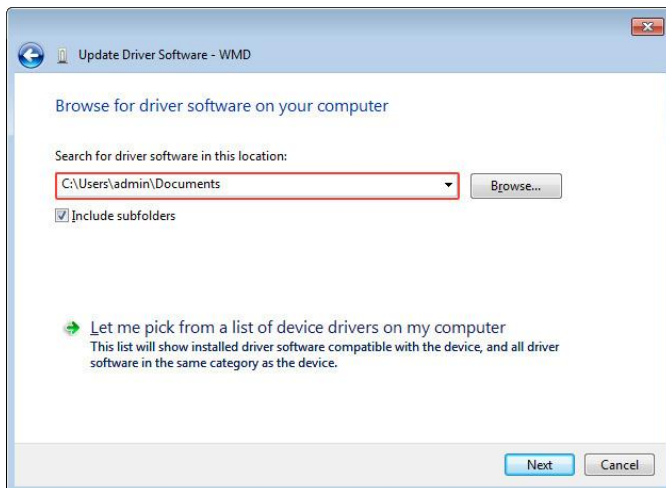
Right click the “WMD” device, then click the “Update Driver Software...” for installing the WMD driver.



4. There are two methods to search for driver software. Please choose the second method to search for WMD driver software.



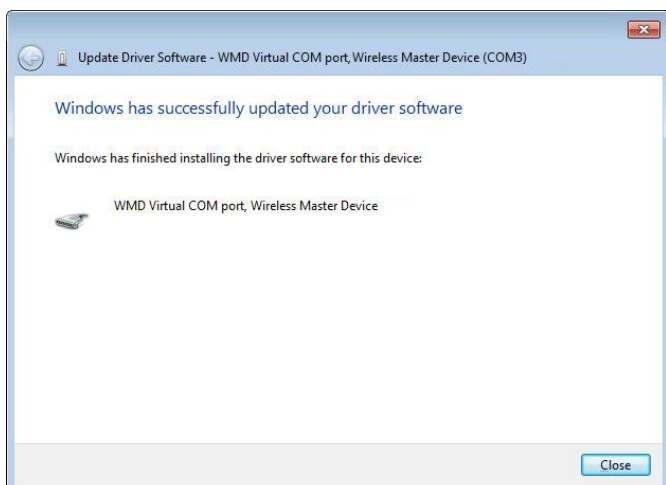
You should copy the WMD driver path to the text box, then system will search for driver software in this location automatically. Of course you can click the “Browse...” button to browse the driver path manually. The WMD driver is in the root directory of the installation CD and its name is “WMDDriver.inf”



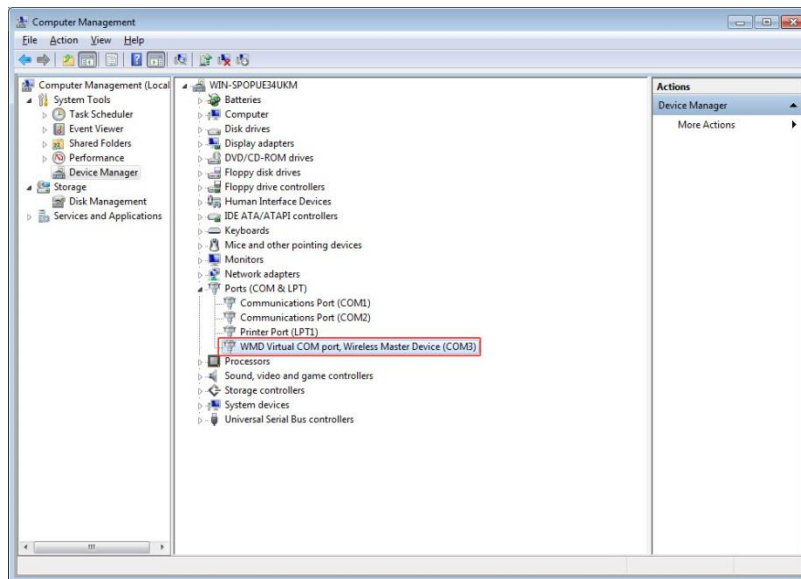
After you finish the browse step, please click the “Next” button to the next step. A Windows Security maybe appears if your computer’s operating system is Windows7 or higher. Please click the second message “Install this driver software anyway” if you want to install the driver successfully.



Wait a few minutes, a message box about successfully installing the driver will appears. The WMD Driver is installed successfully on your computer now.



5. After you finish installing WMD driver, the information of Wireless Master Device will be displayed in the “Device Manager | Ports (COM & LPT) | WMD Virtual COM port, Wireless Master Device (COM*)” as below.

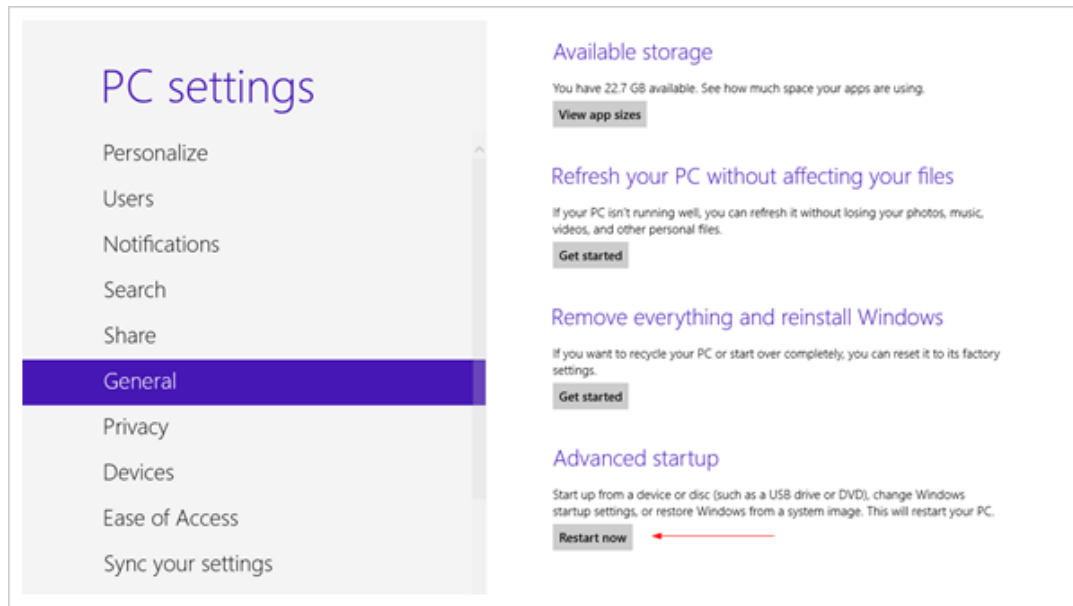


If you have any questions about the installing steps, please contact us.

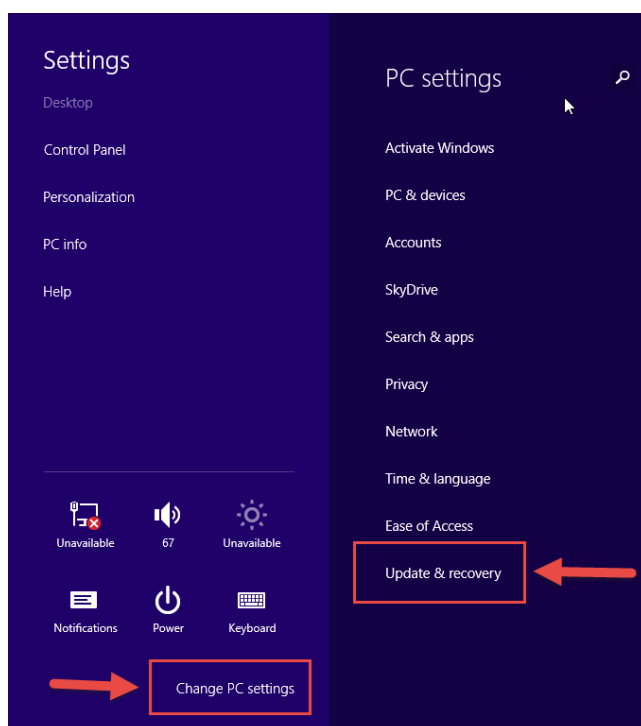
How to install WMD Driver in Windows 8/8.1

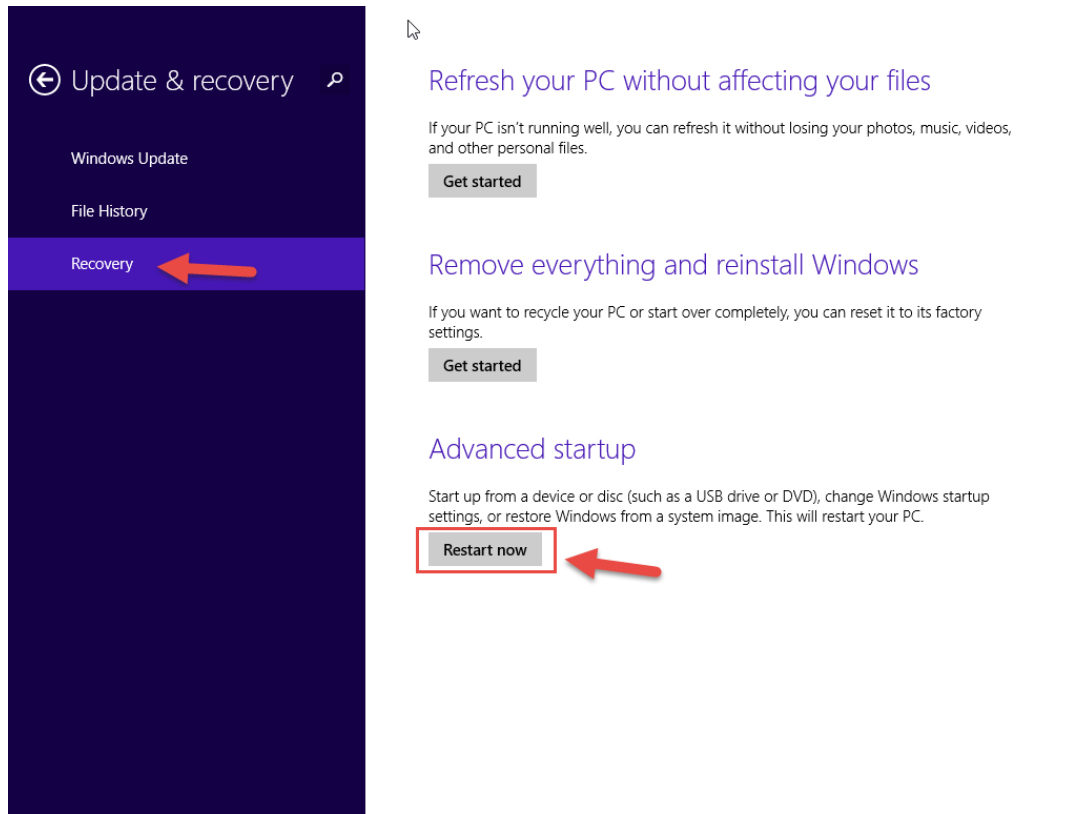
First, press **win + I** to launch the charm bar, and click **Change PC Settings** at the bottom.

Then, in Windows 8, go to **General**, and scroll to the bottom of the page, click **Restart Now** button under **Advanced Startup** section. Remember to save all your work first before clicking it.

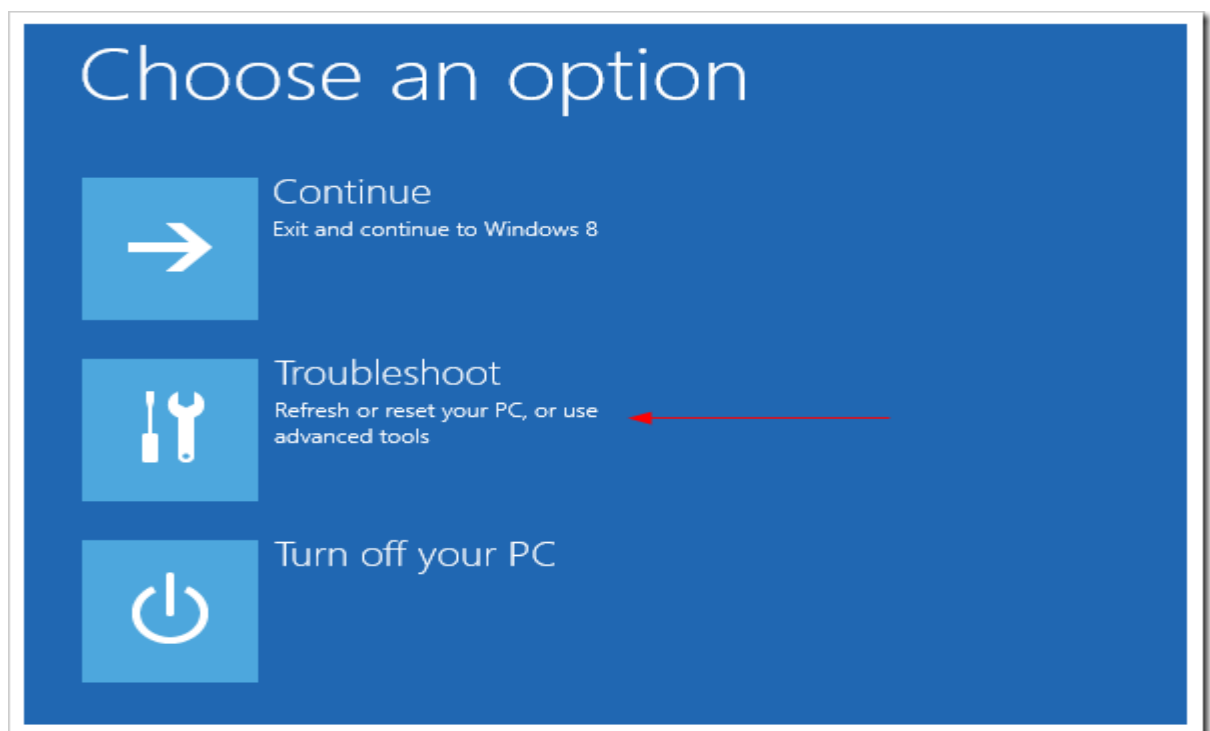


In Windows 8.1, go to **Update & recovery** and click **Recovery** button, click **Restart Now** button under **Advanced Startup** section. Remember to save all your work first before clicking it.

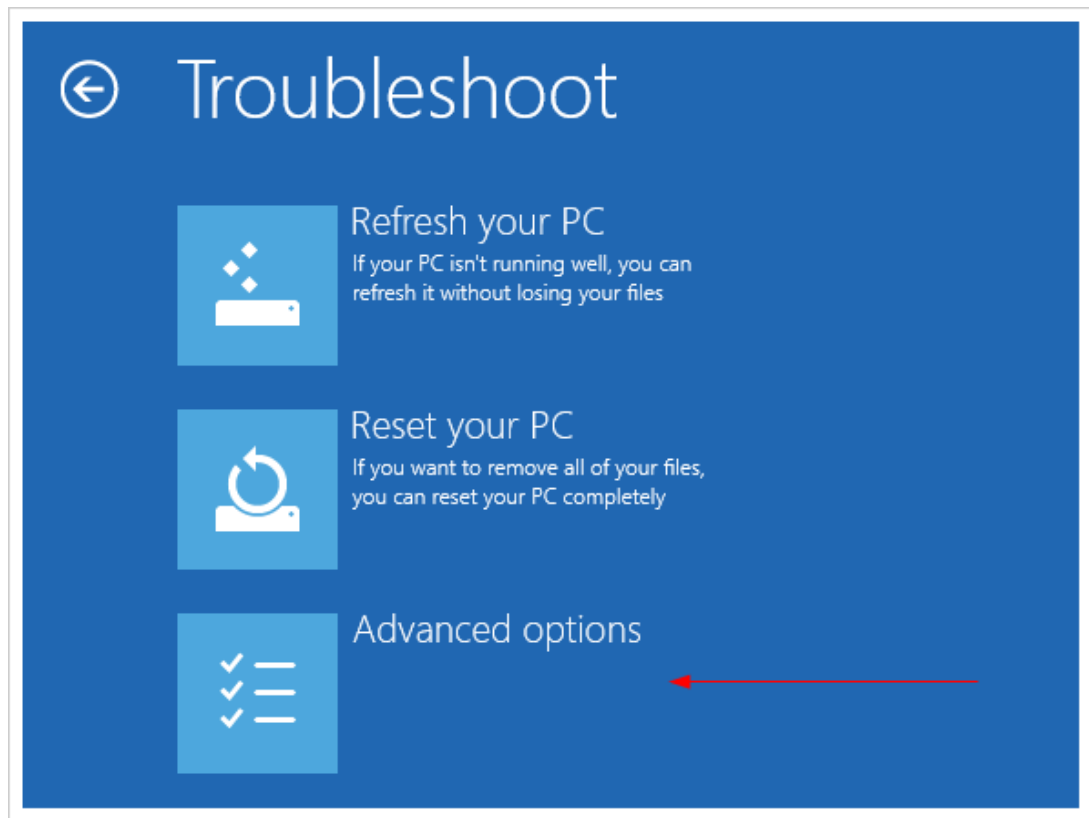




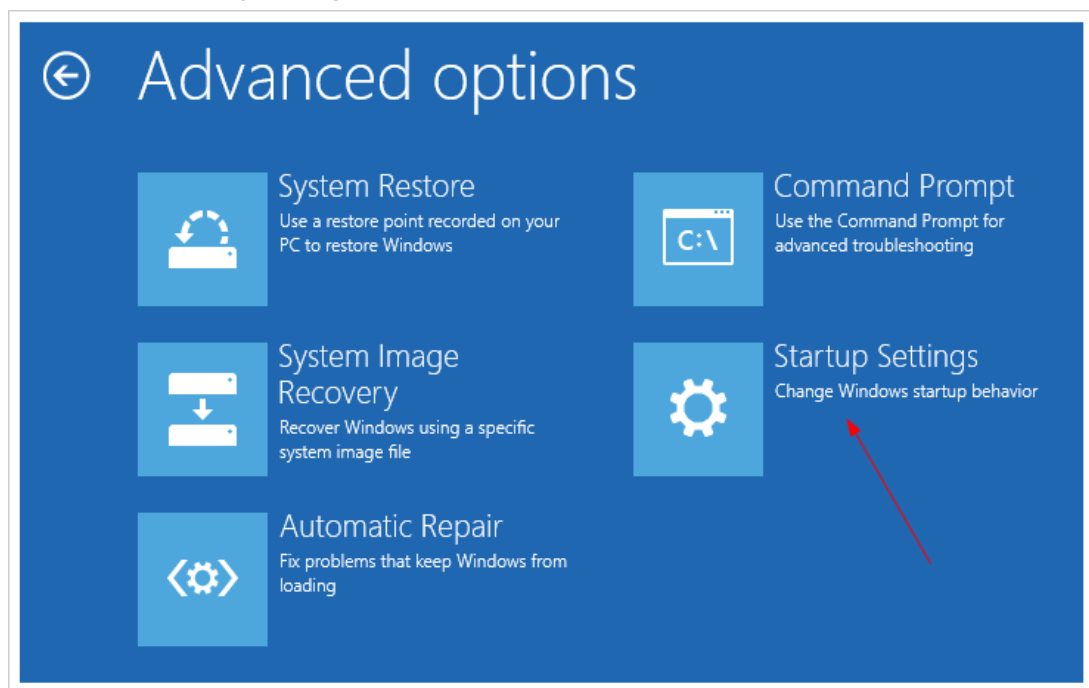
The computer reboots to a startup menu, in which click **Troubleshoot**.



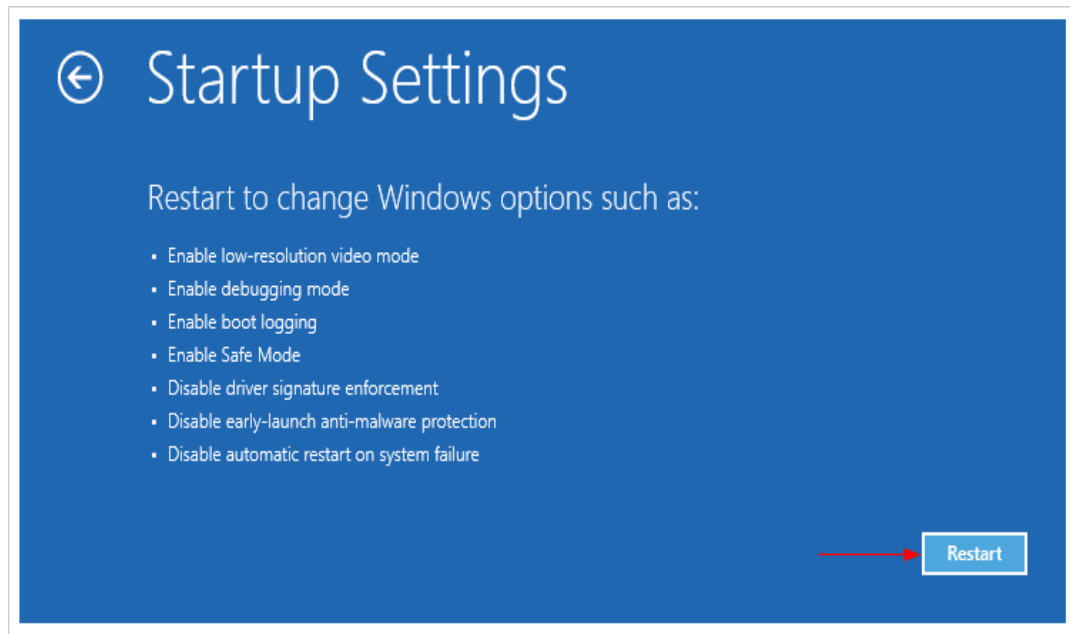
And click **Advanced Options** at next screen.



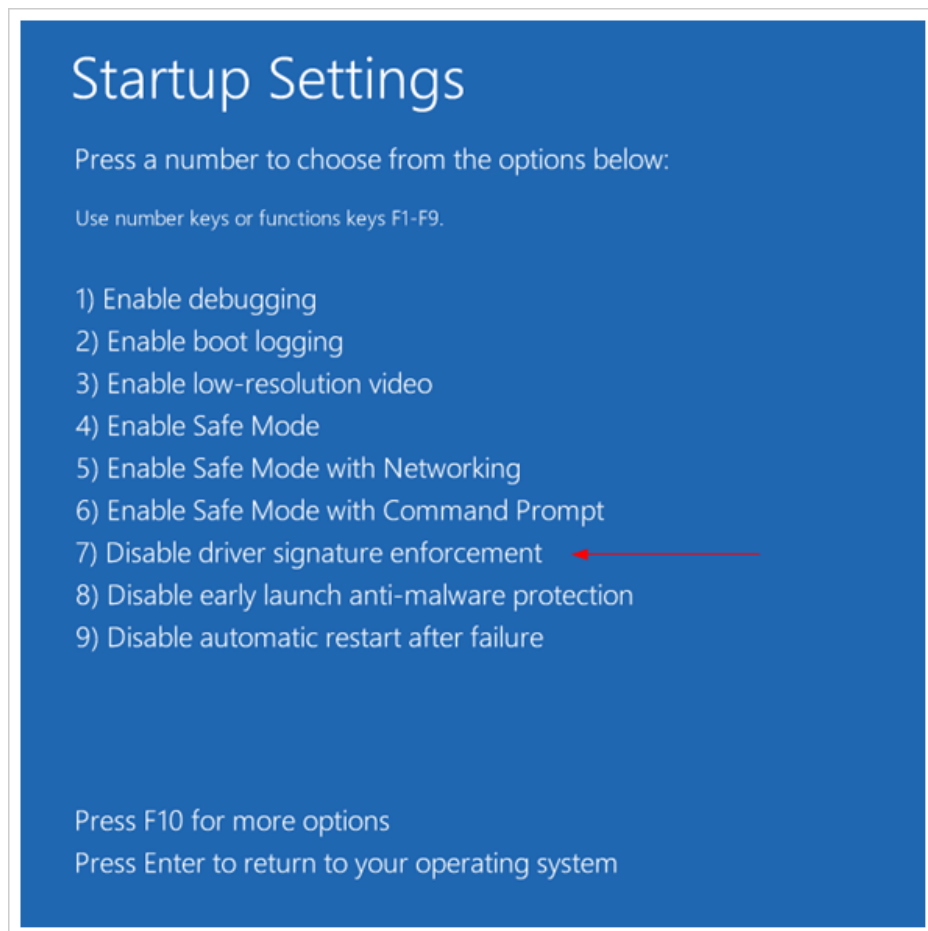
Choose **Startup Settings** next,



And click **Restart** button.

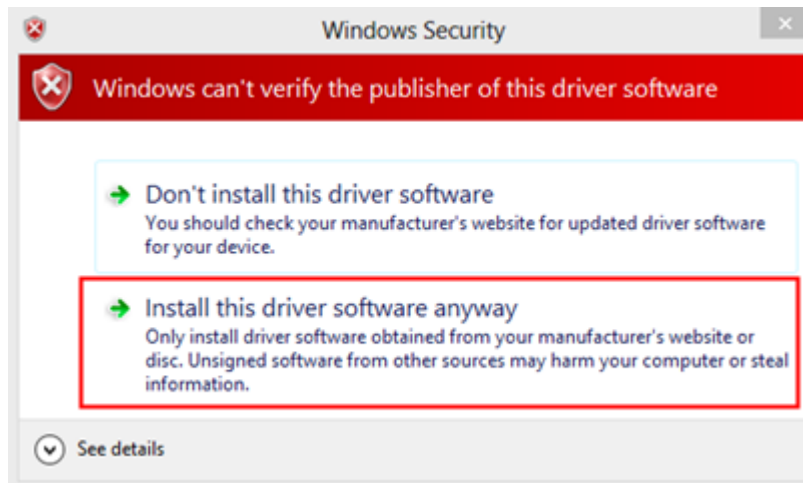


The computer reboots and prompts another menu to choose. One of the items is to **Disable driver signature enforcement**. Press number **7** or **F7** to continue booting to Windows 8 with digital sign enforcement disabled.



Launch **Additel Software**, The configuration wizard will help you to install driver automatically.

And then you were able to get the Windows Security warning window offering you to install this driver software anyway.



It was successful! Restart computer once again to re-enable the digital sign enforcement.

We suggest changing the UAC settings first to see if the Install Anyway window prompts out. The solution showing off in this post should be the last resort to try out. And make sure the driver you are about to install is safe, though not digitally signed.